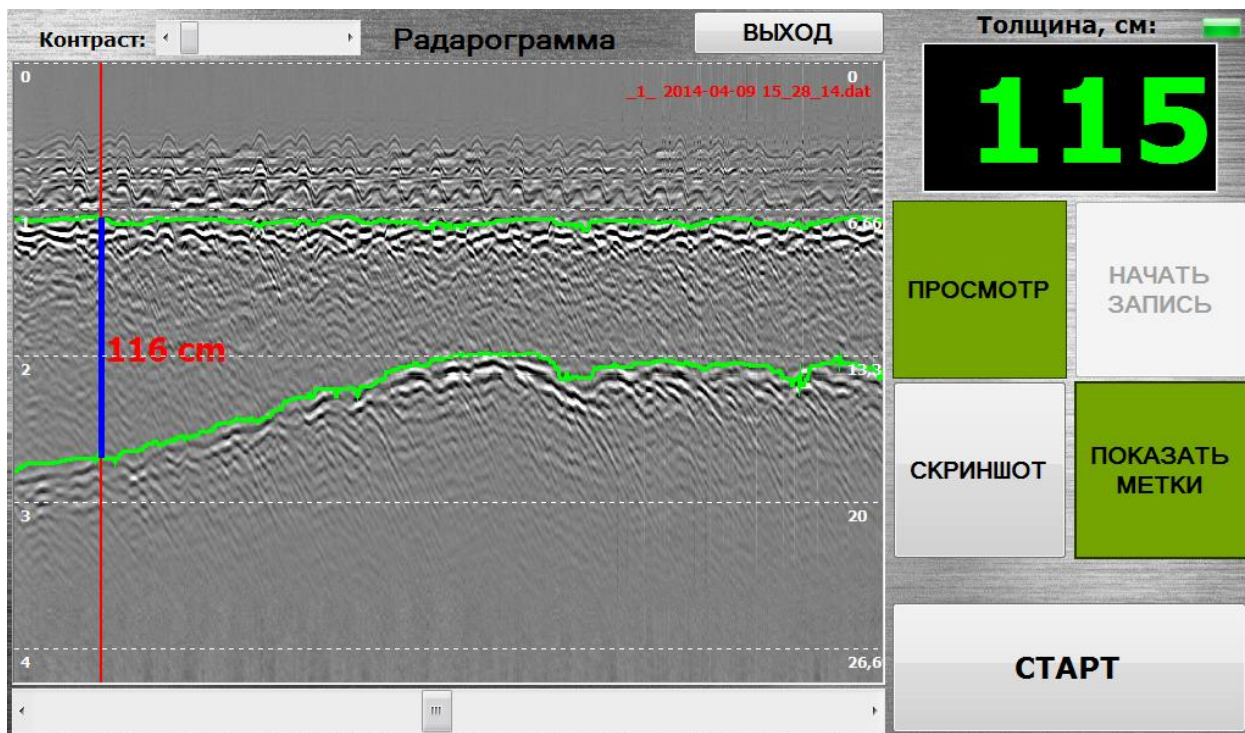
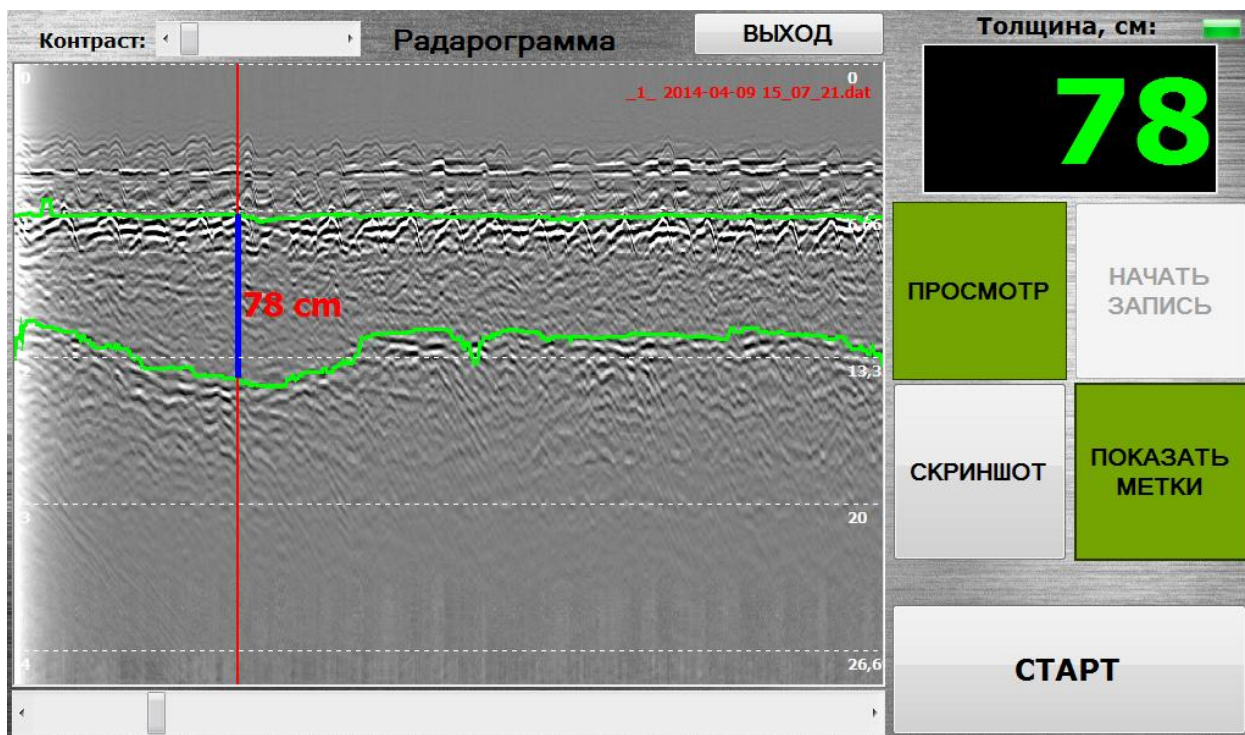


PicoR GPR snow thickness measurement report

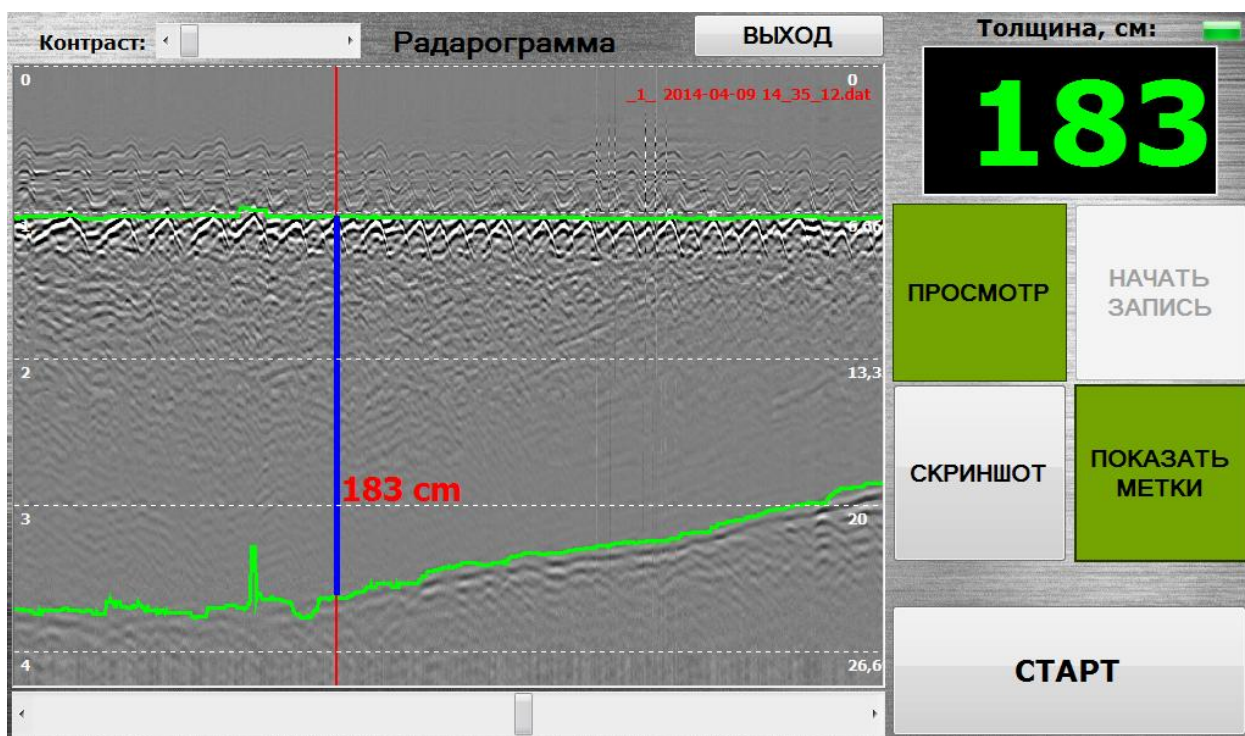
The data obtained by foot profiling of the snow slope. Austria.



Measurement 1: very wet soft snow and no ice at the underground 5°C prepared slope. We did a check measurement every 2 m with a probe head. depth: 124cm, 98cm, 95cm, 78cm, 68cm, 69cm, 79cm, 71cm,

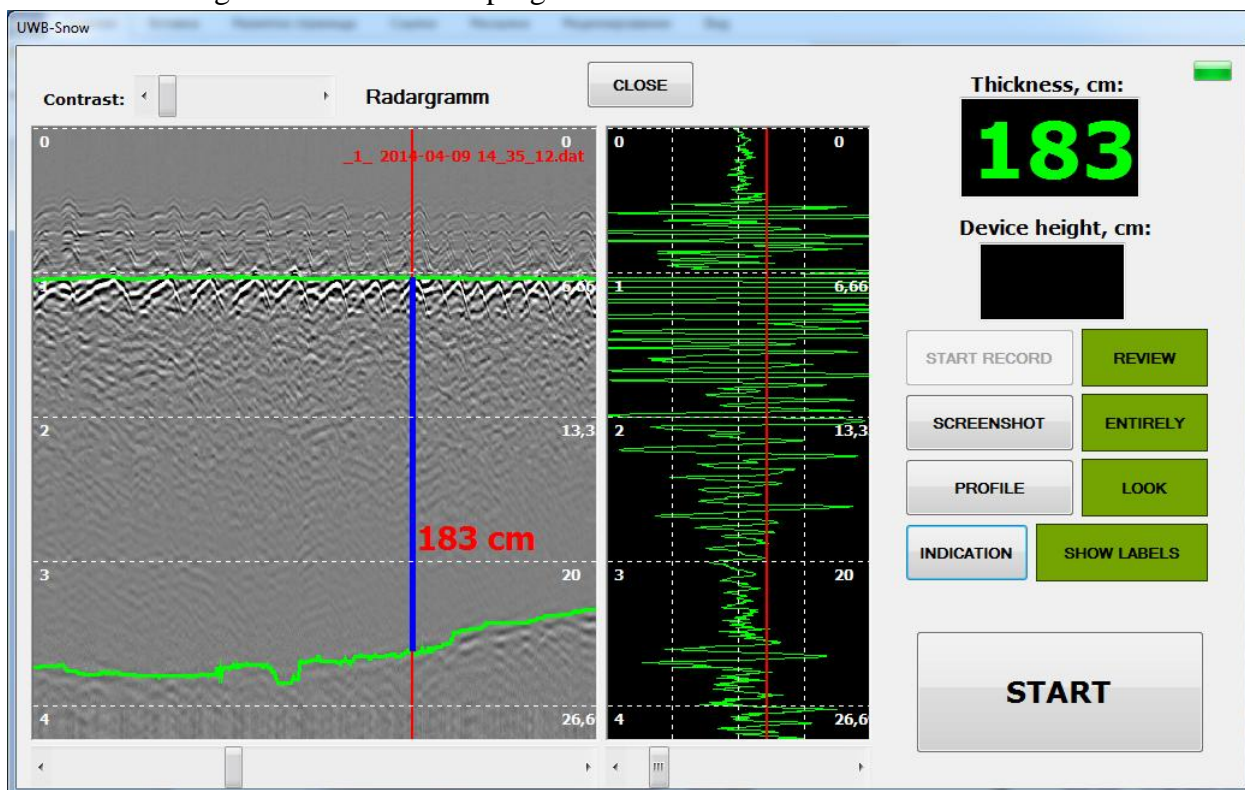


Measurement 2: wet soft snow with 5cm ice at the underground 5°C prepared slope. We did a check measurement every 2m with a probe head. Start depth: 72cm, 70cm, 67cm, 65cm, 86cm, 71cm

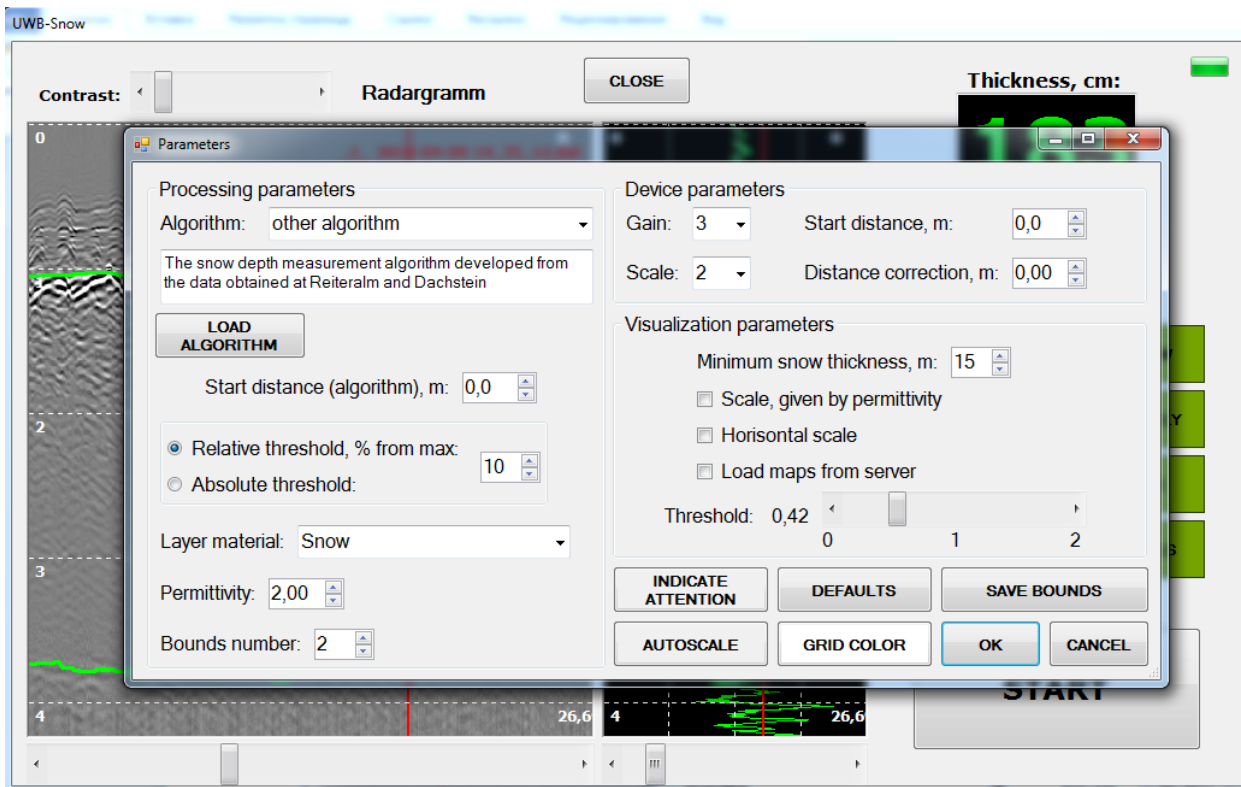


snow consistency: pressed artificial snow (0°C) Underground: slate, soil prepared slope. We did a check measurement every 2m with a probe head. depth: 168cm, 172cm, 165cm, 156cm, 144cm, 139cm, 129cm

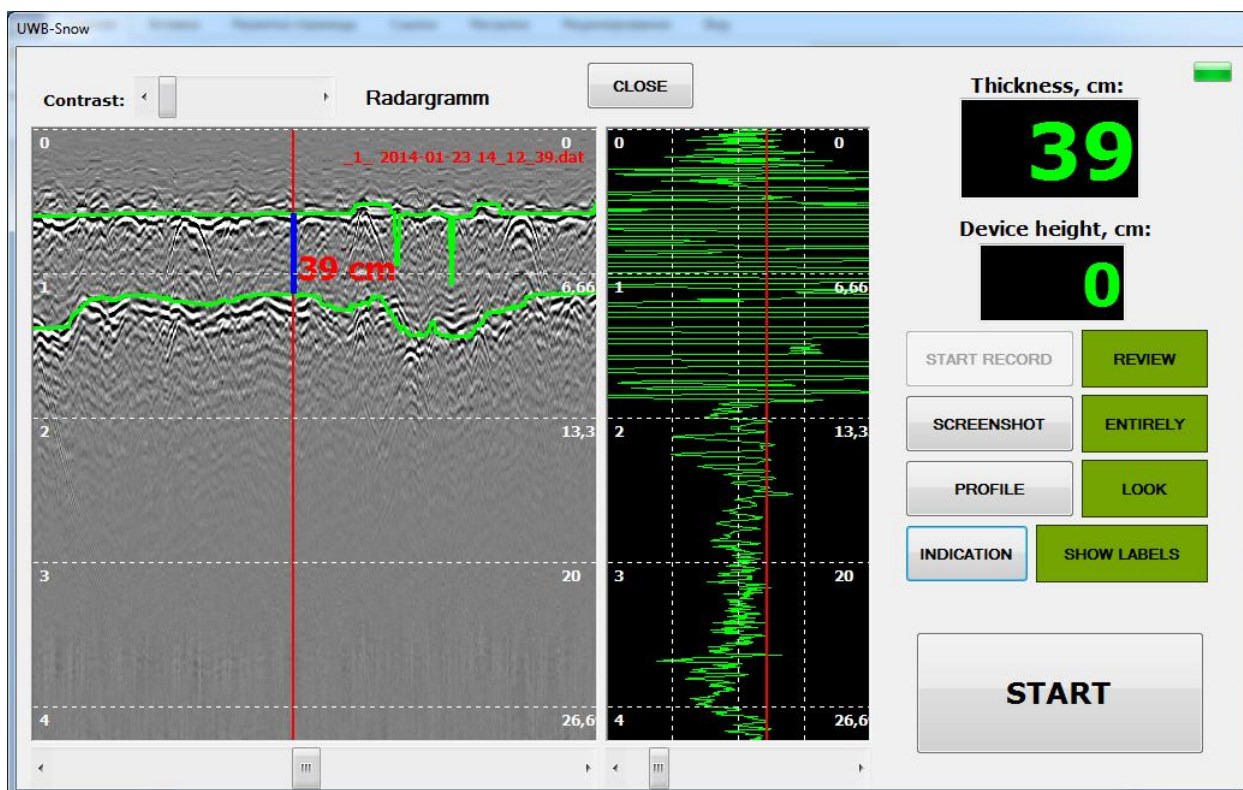
The same on English interface of the program

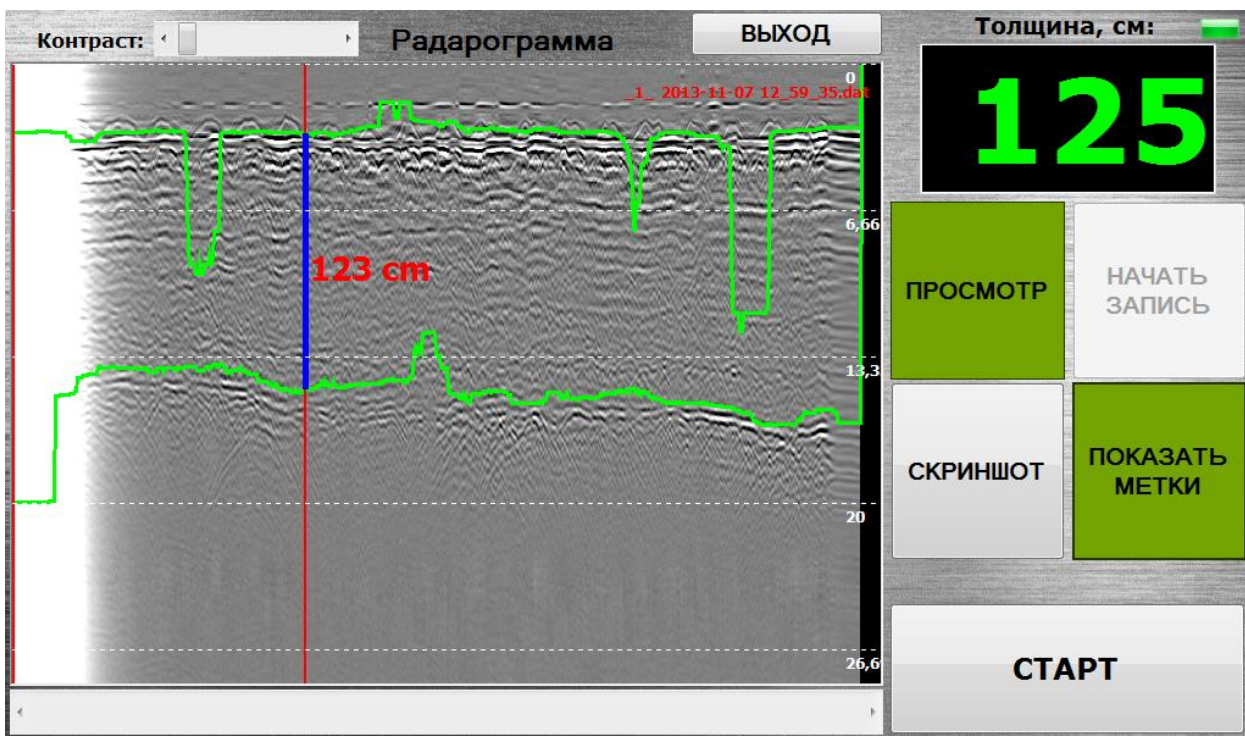
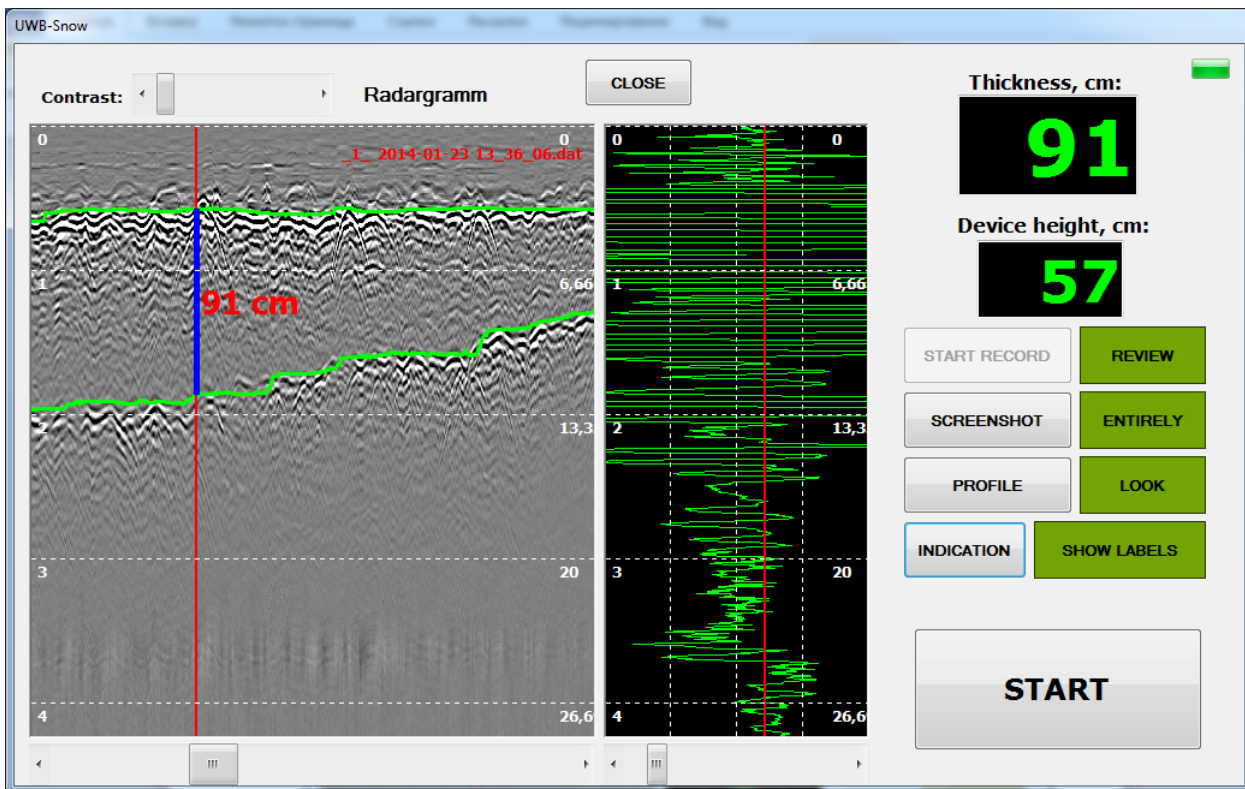


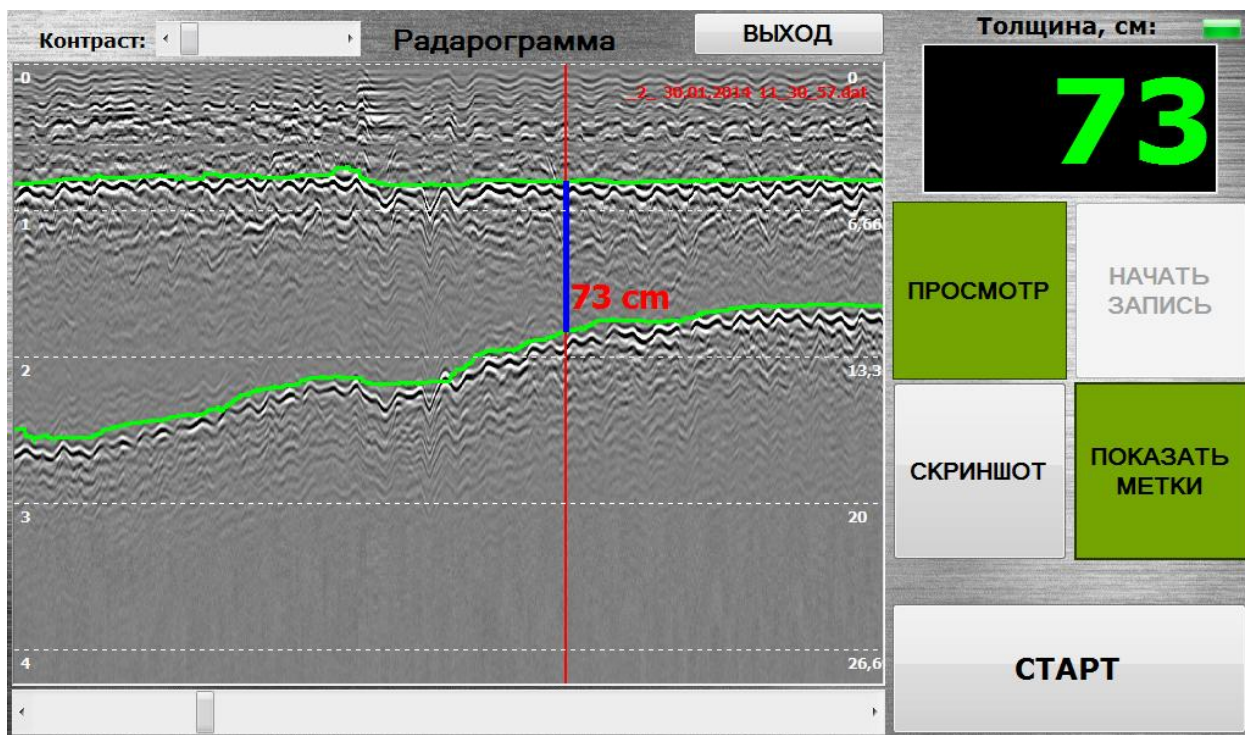
The parameters window



A few more examples of different data from resorts in Austria







Measurements in the ski resort of SNEZHKOM (bottom of reinforced concrete construction).
Moscow.