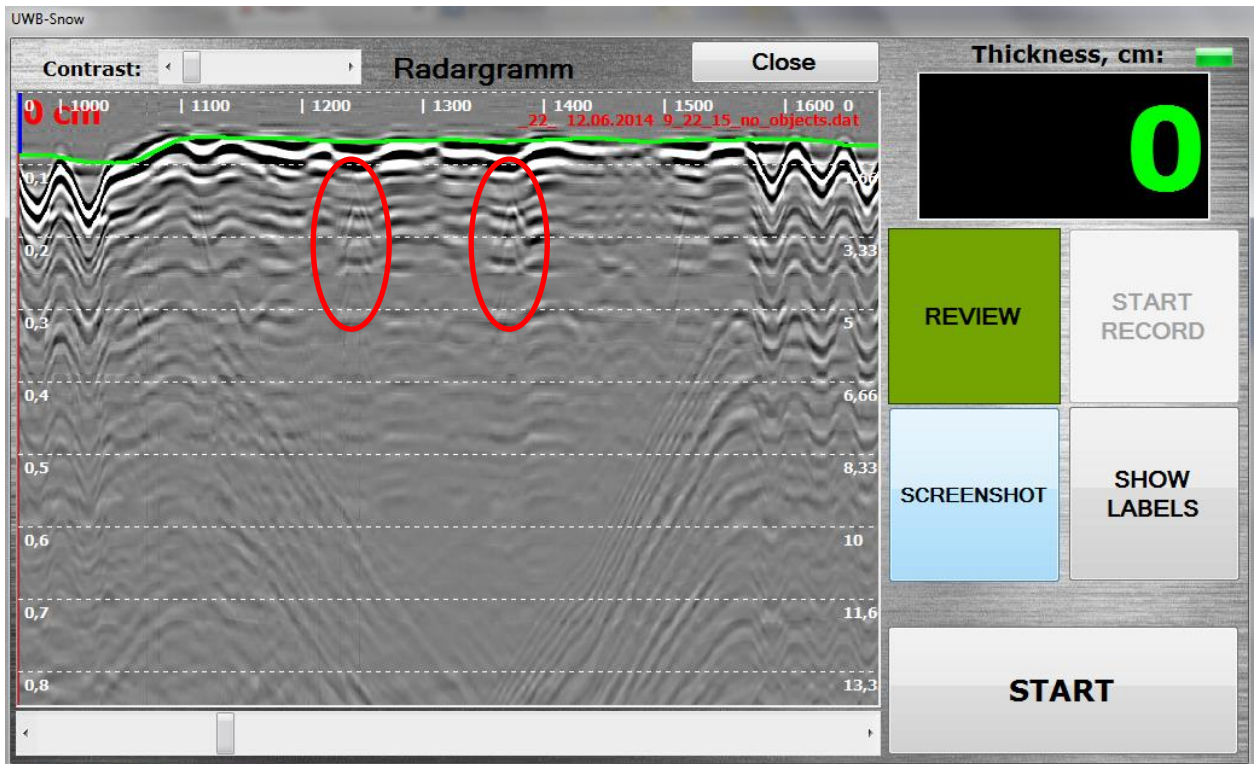
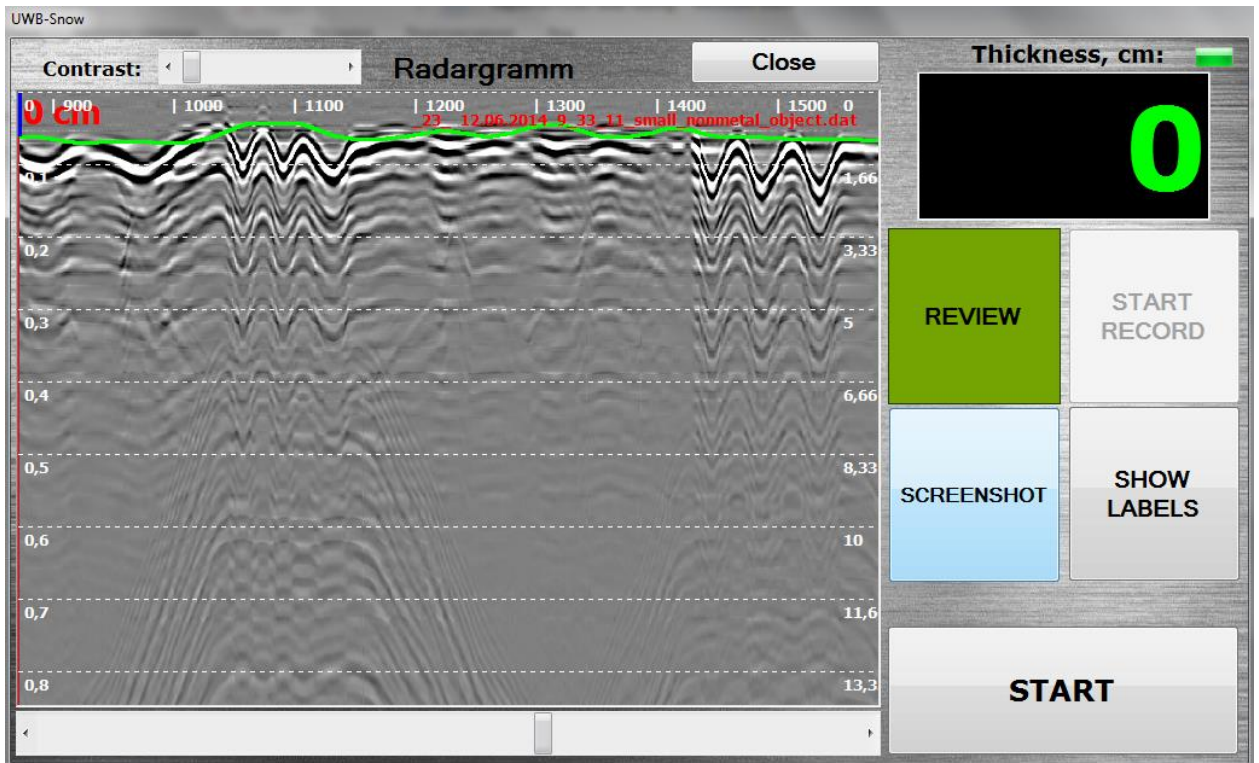


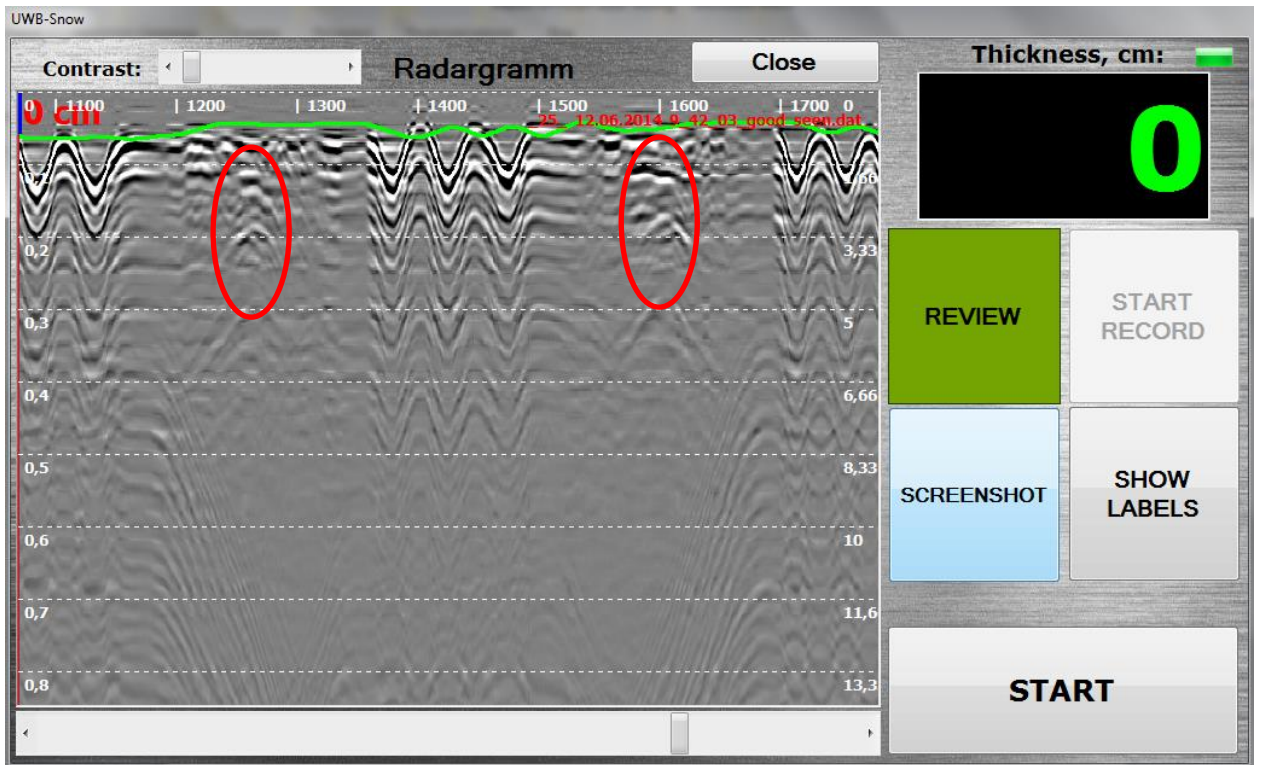
# Report



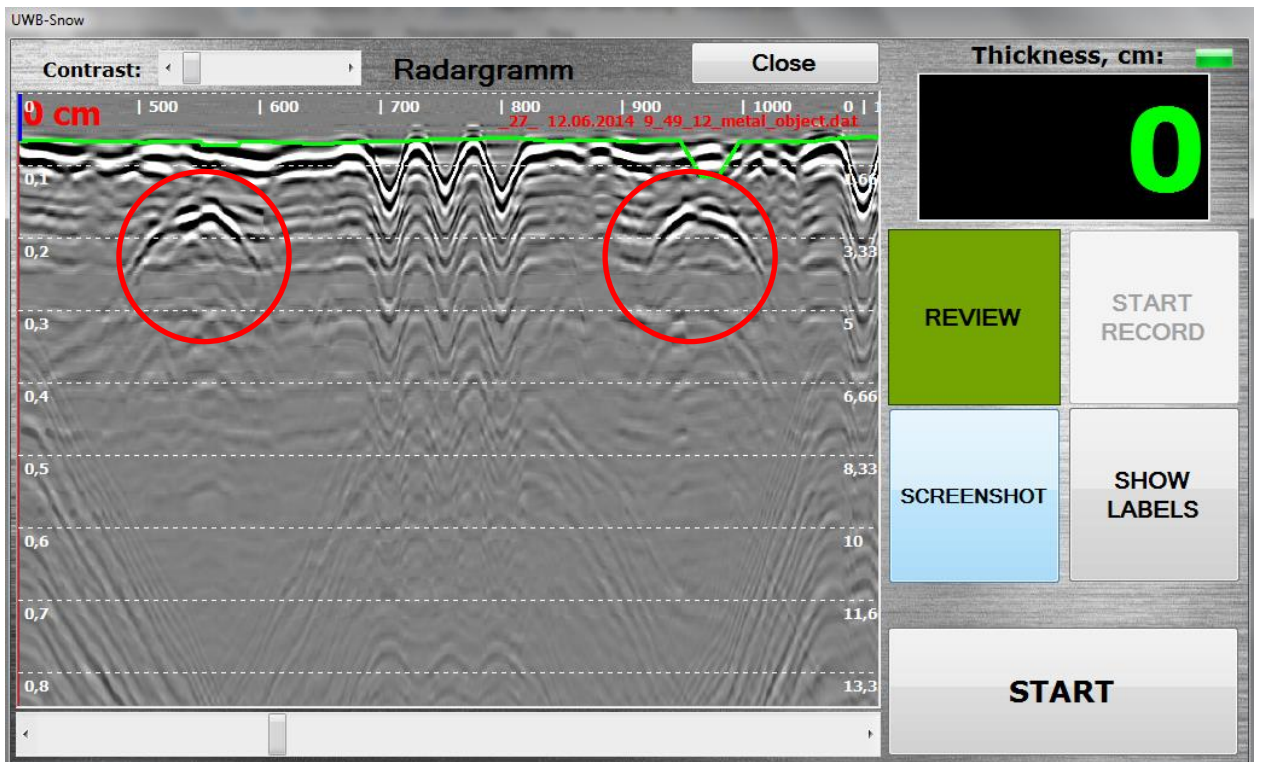
1. Ground. There is no objects but we can see strange reflections that looks like objects.



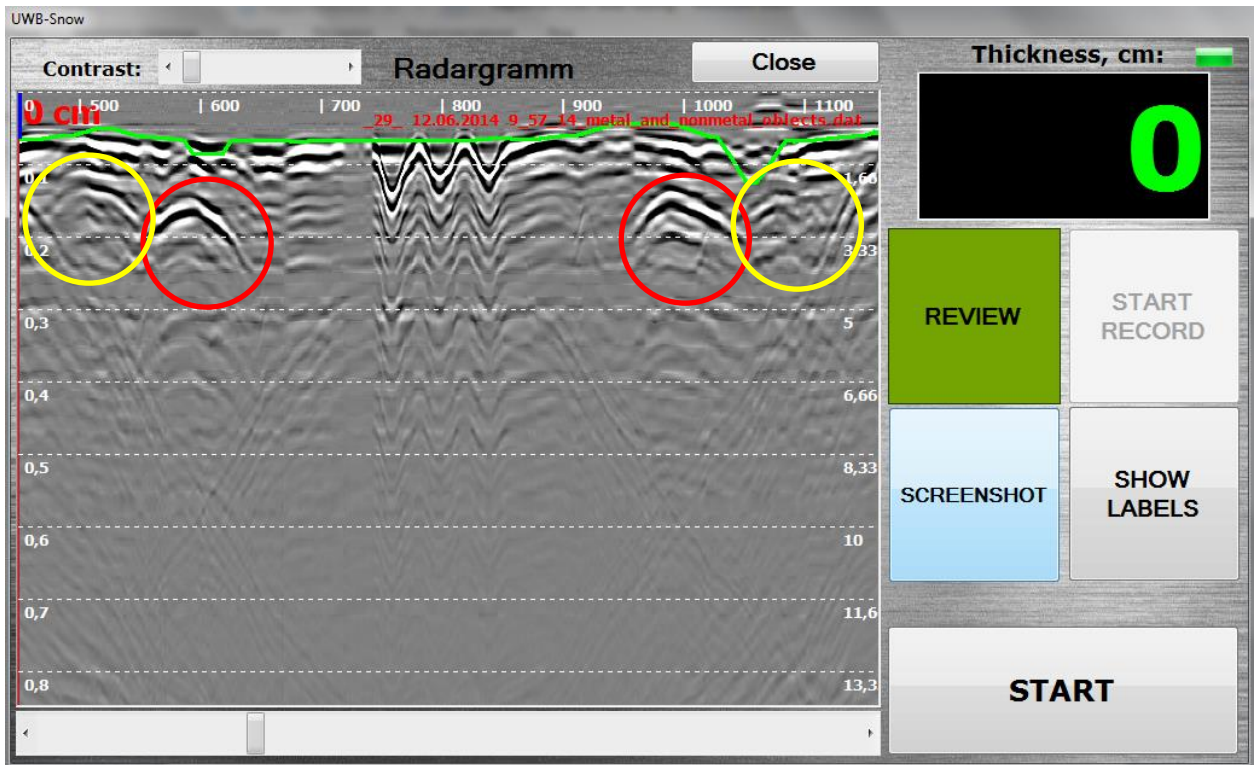
2. Ground. Small non-metal object. After the first examination of radargram object did not found.



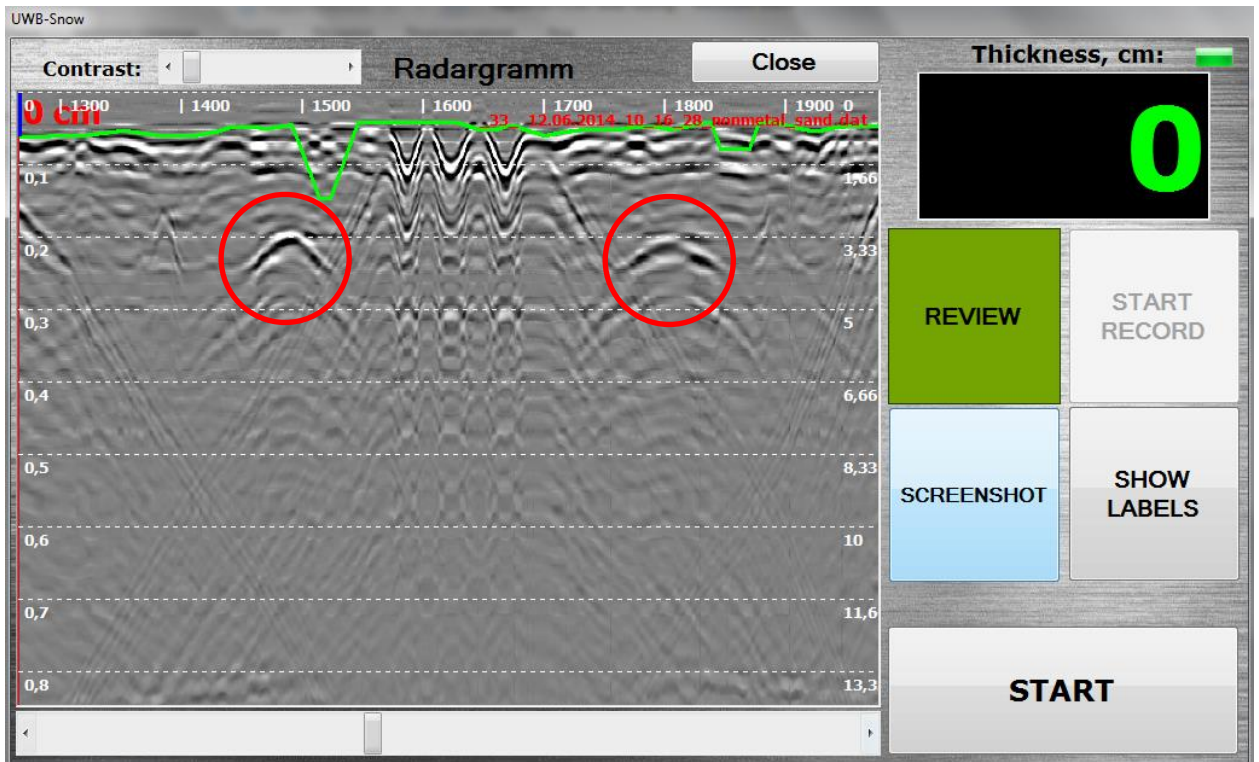
3. Ground. Big non-metal object - well seen.



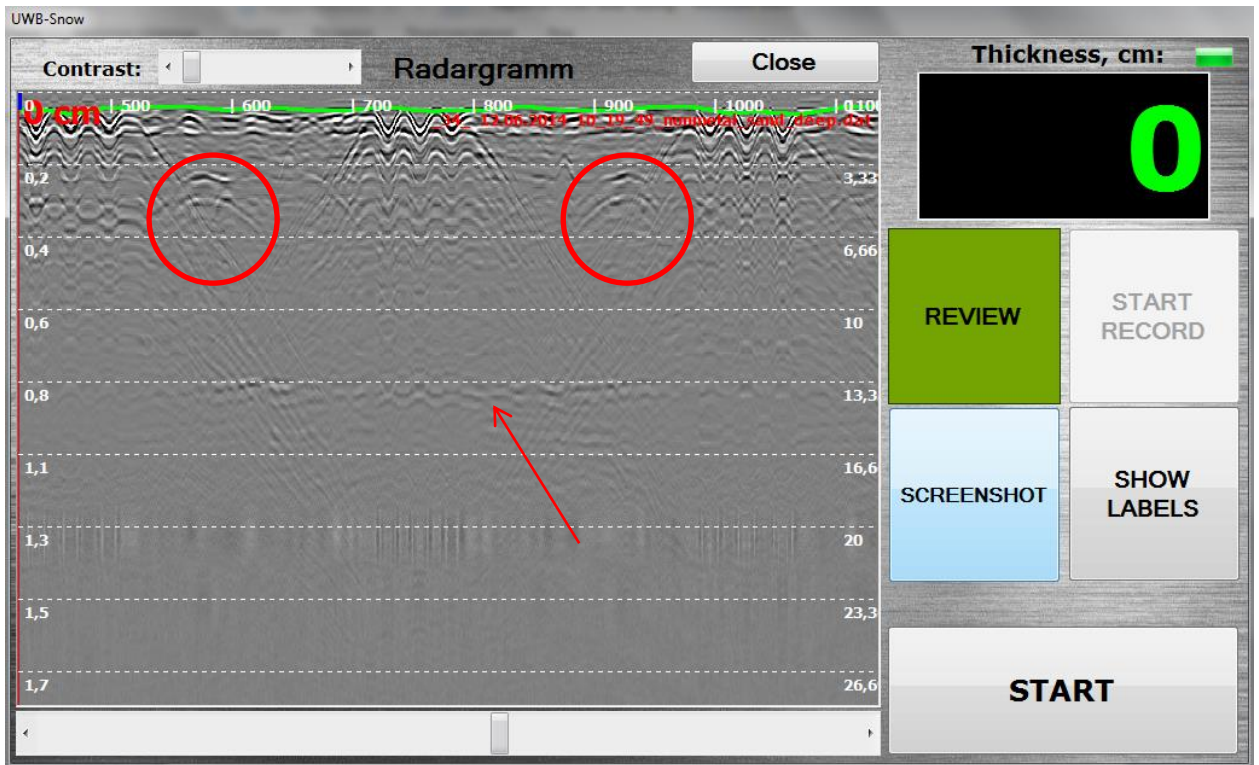
4. Ground. Big metal object – very well seen.



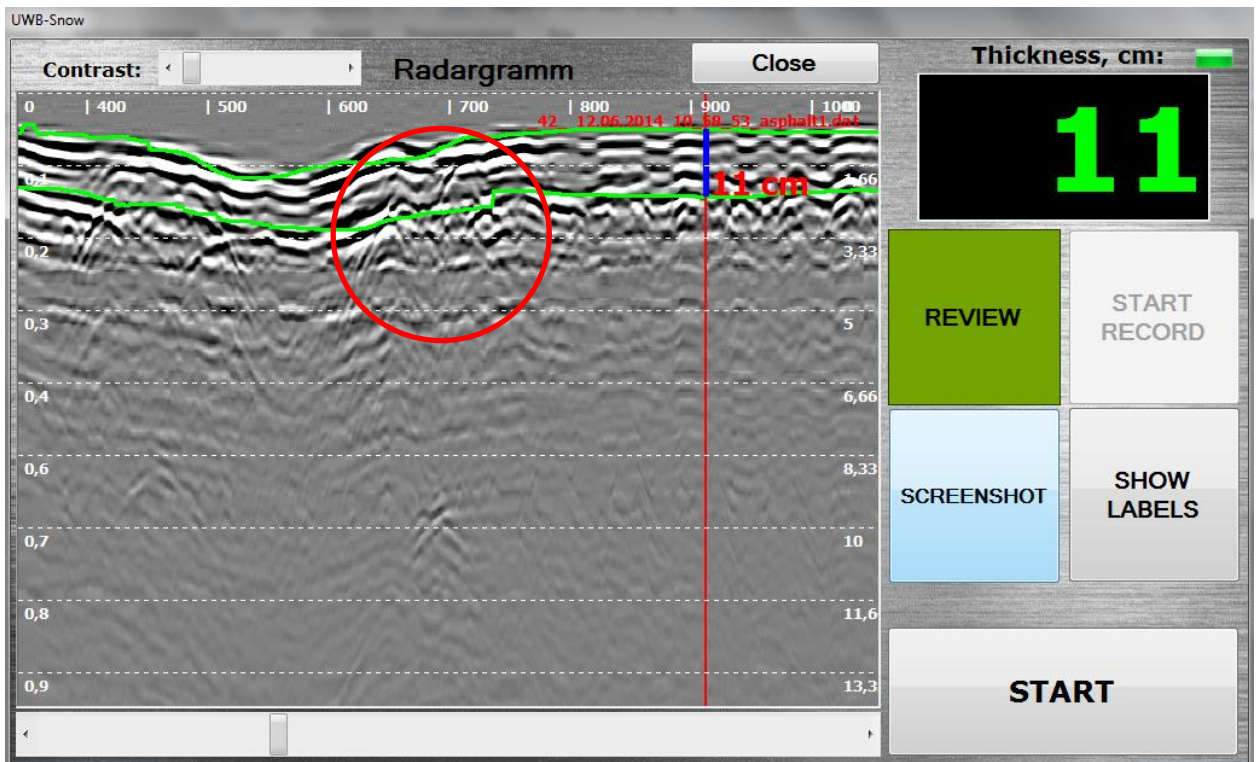
5. Ground. Big metal and non-metal objects – well seen (metal – red, non-metal – yellow).



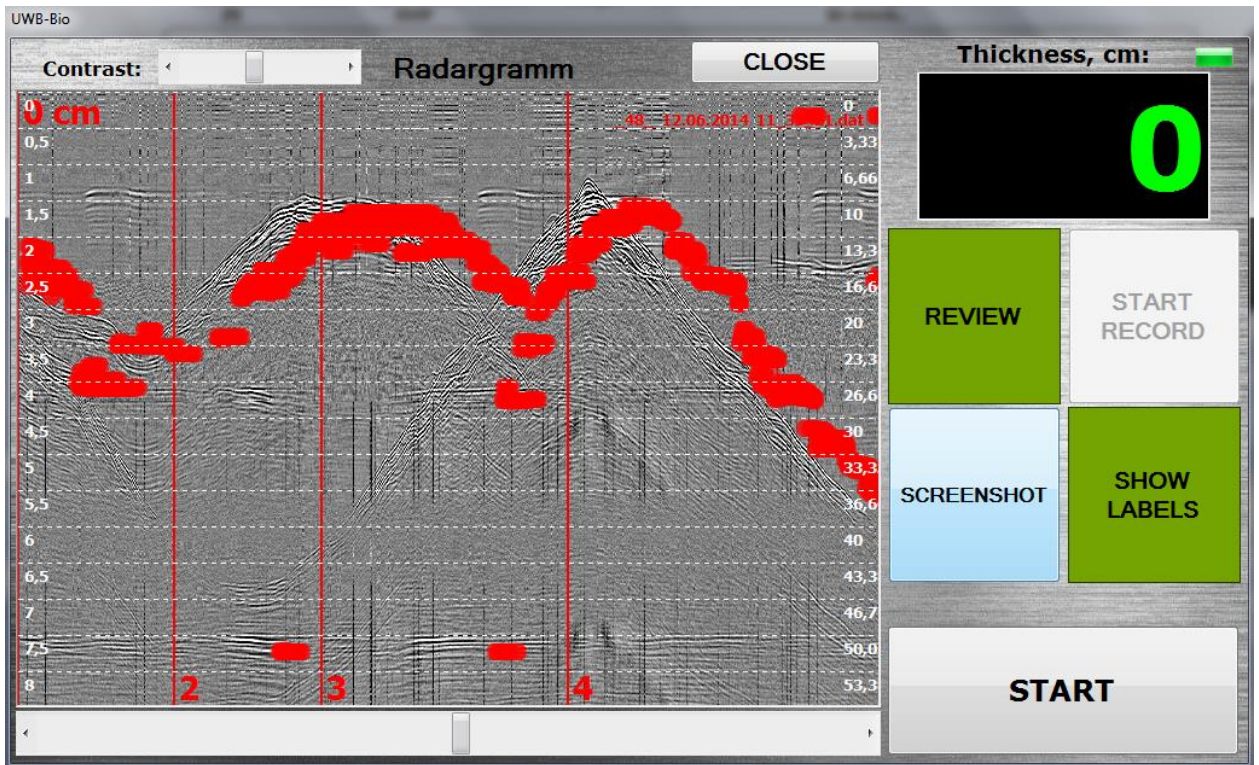
6. Sand. Big non-metal object – very well seen. Deepness is about 15 cm



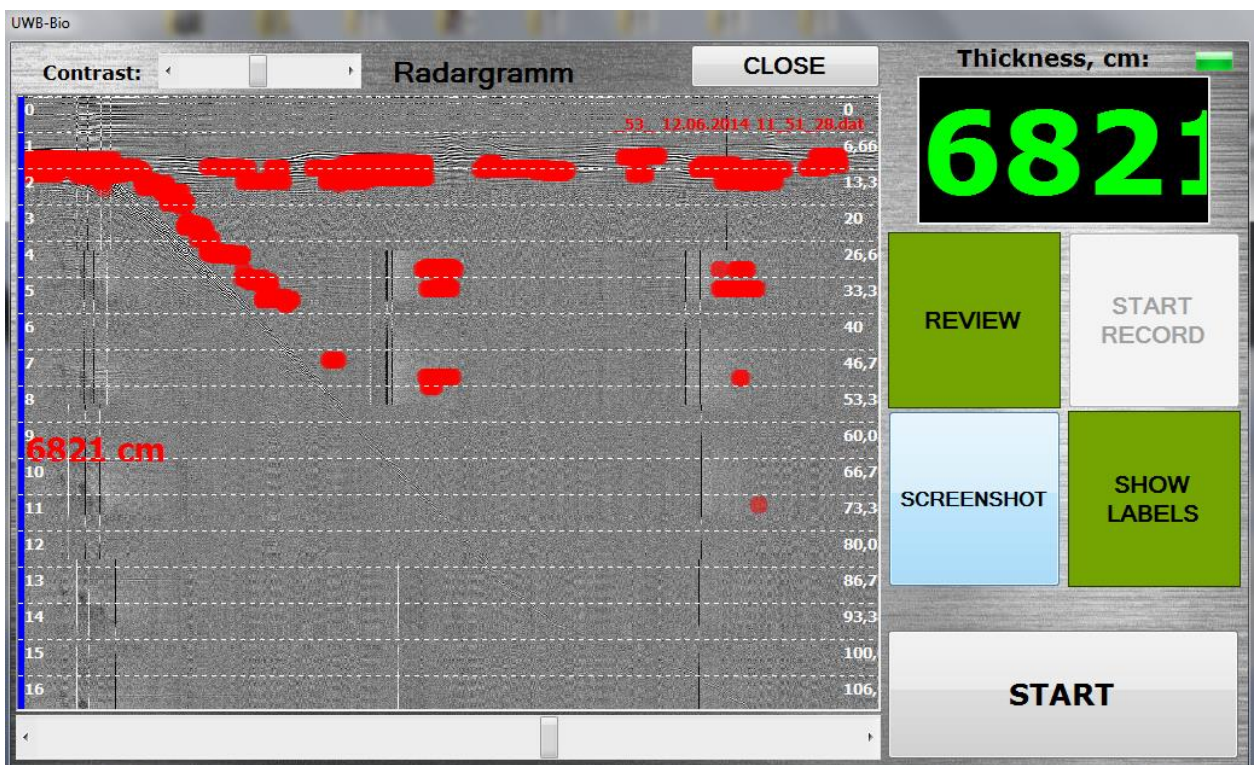
7. Sand. Big non-metal object – very well seen. Deepness is about 20-25 cm. Perhaps we can see the bottom of the box with sand



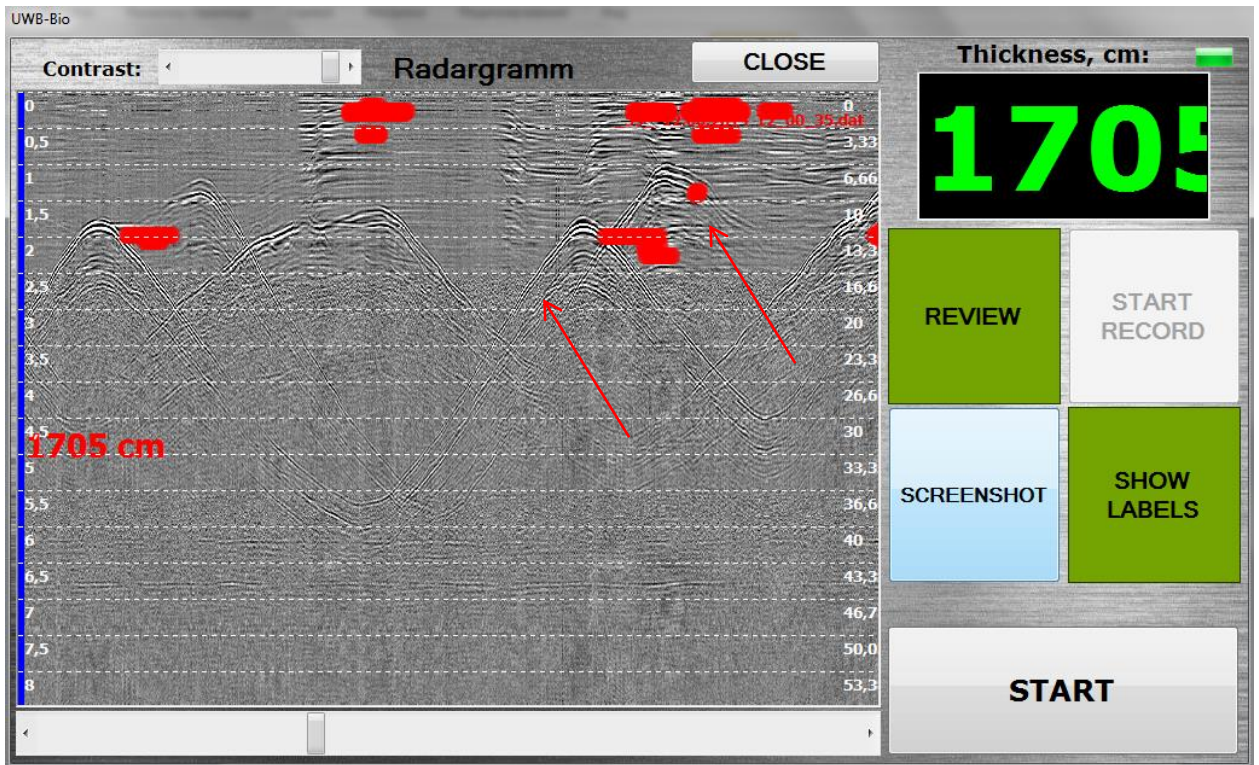
8. Asphalt. After the automatic algorithm 3 working and a small manual correction is defined thickness of asphalt in 10-11 cm. Also see a metal hatch.



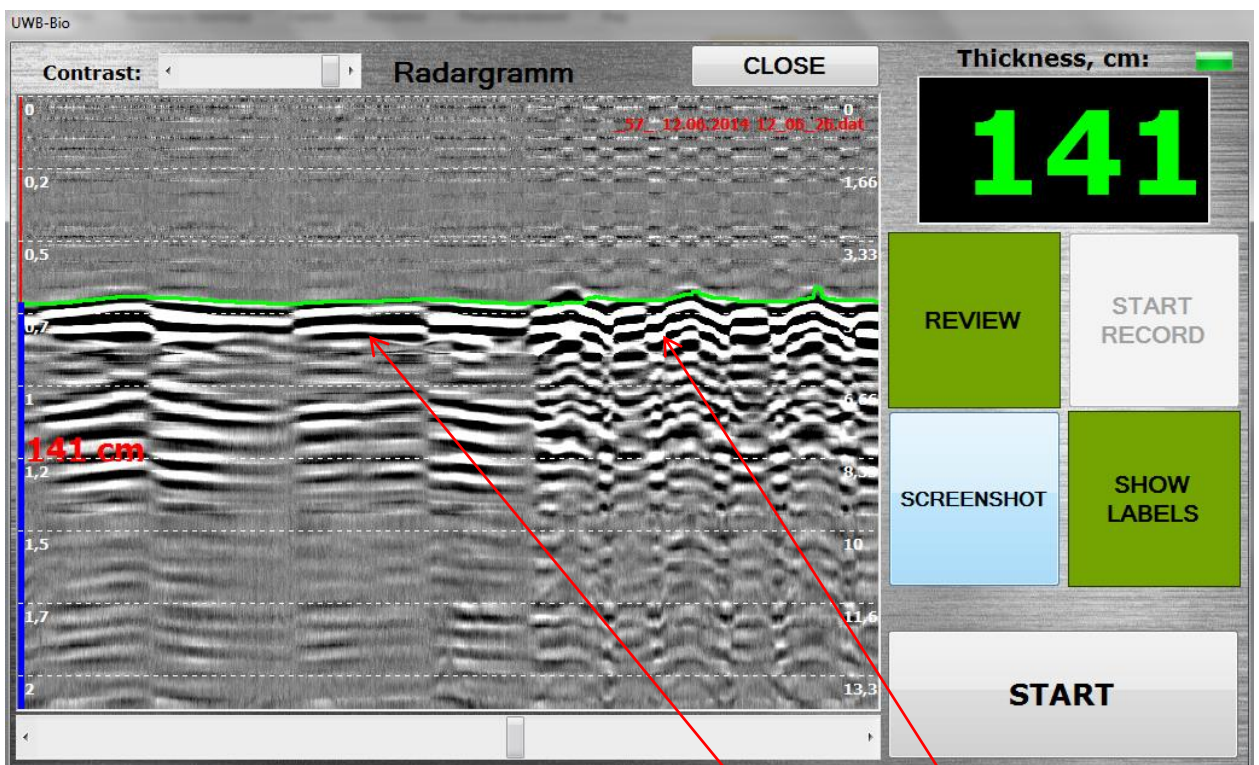
9. Motion detection. The length of the room is about 7 meters. We can see the movement of people to the end of the room and back, and also the movement of two people in opposite directions.



10. Motion detection. The test at the maximum detection range in open areas. With this version of the program the device allows you to visually see the person at a distance up to 15 m.



11. Motion detection the people behind the wall. The wall thickness is about 20 cm (material - ?). You can clearly see the movement around the room behind the wall two people



12. the detectio at a short distance (1 m) behind the wall of breath and the stirring of man